

Jellybean Learning

The Future of the University Campus



unwork

AUDE
ASSOCIATION OF UNIVERSITY
DIRECTORS OF ESTATES
Excellence in estates and facilities



unwork

AUDE
ASSOCIATION OF UNIVERSITY
DIRECTORS OF ESTATES
Excellence in estates and facilities

The Jellybean Campus

Research

- Universities creating new spaces for researching.
- Removing physical resources, making room for digital working.
- Automated storage and retrieval systems being used to manage physical resources.



Engage

- Engaging with students is increasingly important.
- Students feel they will not see an improvement during their time at the university.



Learn

- There has been a shift towards digital natives, and this has changed the way that people learn.
- Students of today are also more likely to learn remotely, using digital courses such as MOOCs.



Analyse

- Organisations are now able to collect vast amounts of information about individuals and their activities and interactions.
- Using this information, universities can start to make predictions to enhance and improve the student experience.

Smart

- The embedding of technology is opening up new opportunities for innovation.
- Harnessing the power of smart buildings will enhance efficiency while delivering a better user experience and improved sustainability.



- As tuition fees increase, students looking to get value for their money, and so focus has shifted towards being able to get a job after university.
- Universities already offer dedicated resources and support for careers, but they are increasingly looking to create partnerships with employers.

Partner



- Universities are also exploring ways to move certain departments or functions outside of the campus to benefit from a different location or collaboration with industry.
- Universities are forming partnerships with a range of external stakeholders that help the university utilise their space, and forge important links with the local community.

- Many organisations including universities are opening their space up to external users.

- The campus should be considered as part of an ecosystem, interacting with a range of other organisations for mutual benefit.

Work



Teach

- The increase in ownership of personal devices is often bypassing educators as people learn on their own and online.
- Huge quantities of information make it more important to teach how to evaluate information as well as how to obtain it.







Science

[Home](#) > Science

AlphaGo Zero: Google DeepMind supercomputer learns 3,000 years of human knowledge in 40 days

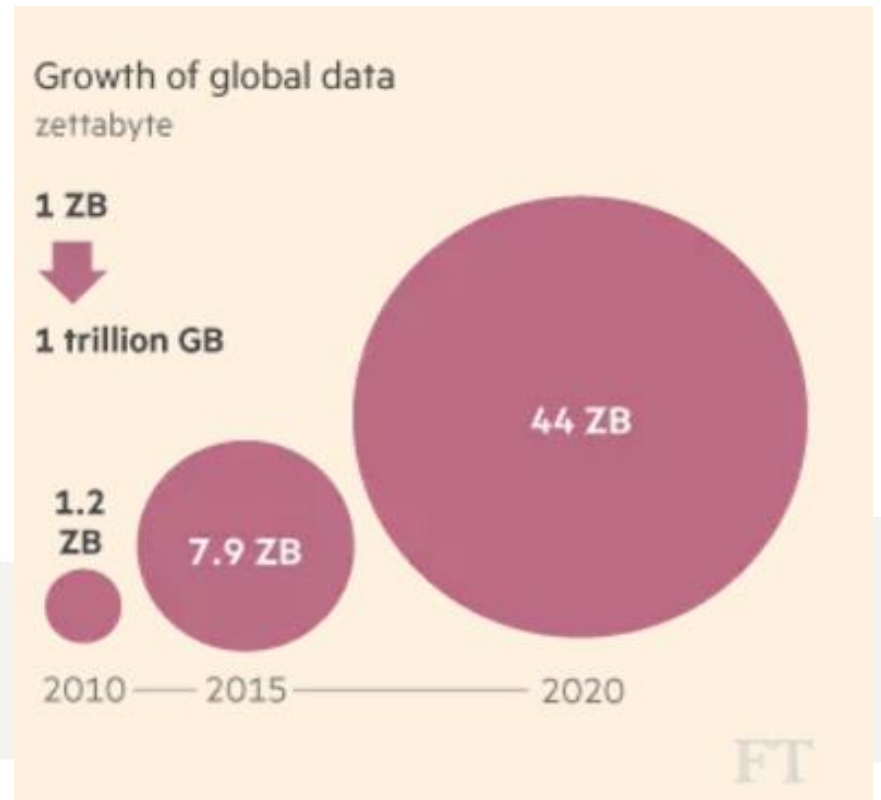


Gartner Says 8.4 Billion Connected "Things" Will Be in Use in 2017, Up 31 Percent From 2016

Consumer Applications to Represent 63 Percent of Total IoT Applications in 2017

Gartner, Inc. forecasts that 8.4 billion connected things will be in use worldwide in 2017, up 31 percent from 2016, and will reach 20.4 billion by 2020. Total spending on endpoints and services will reach almost \$2 trillion in 2017.

Regionally, Greater China, North America and Western Europe are driving the use of connected things and the three regions together will represent 67 percent of the overall [Internet of Things](#) (IoT) installed base in 2017.



INSIDE: A 14-PAGE SPECIAL REPORT ON TECH STARTUPS

The Economist

JANUARY 18TH-24TH 2014

Economist.com

If the French ran America

China cracks down on microblogs

New opportunities for organised crime

Google and the internet of things

UKIP: normal for Norfolk?

Coming to an office near you...

What today's
technology will do to
tomorrow's jobs





Digital
Immigrants

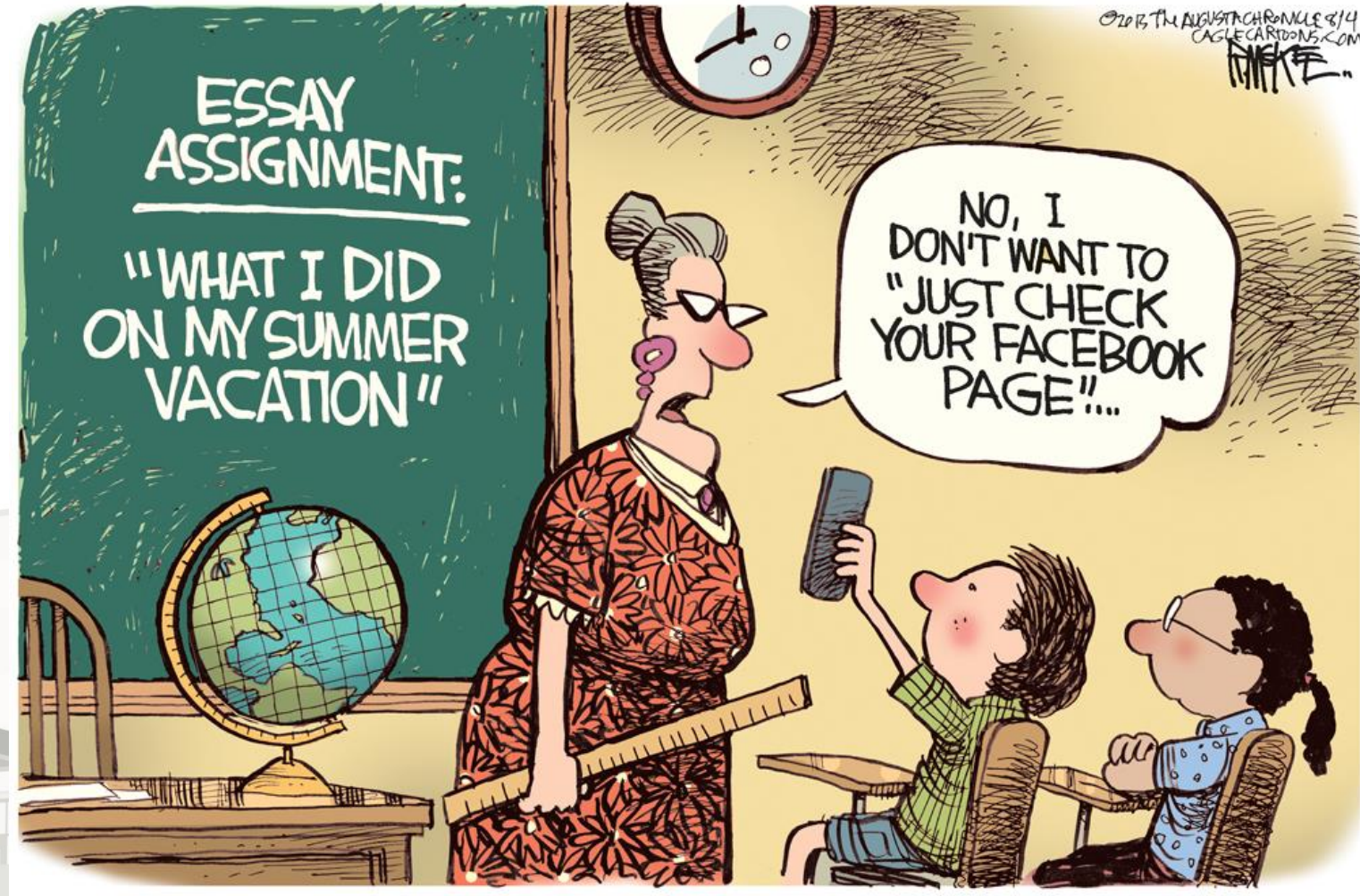


Digital
Natives



Digital
Dependants





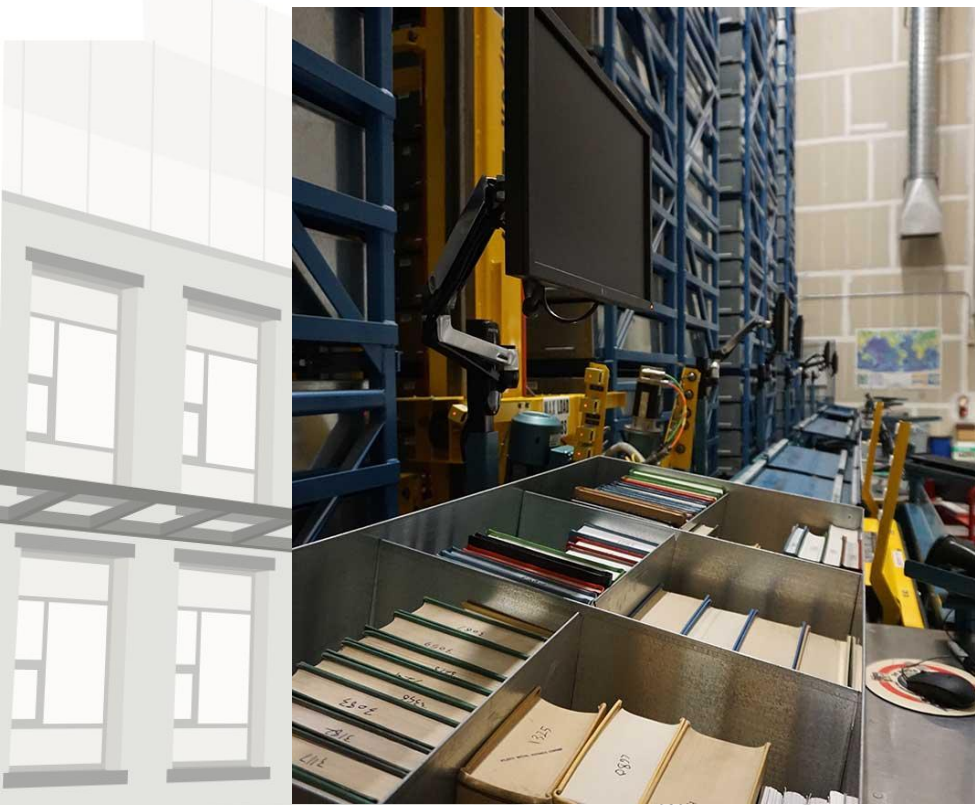
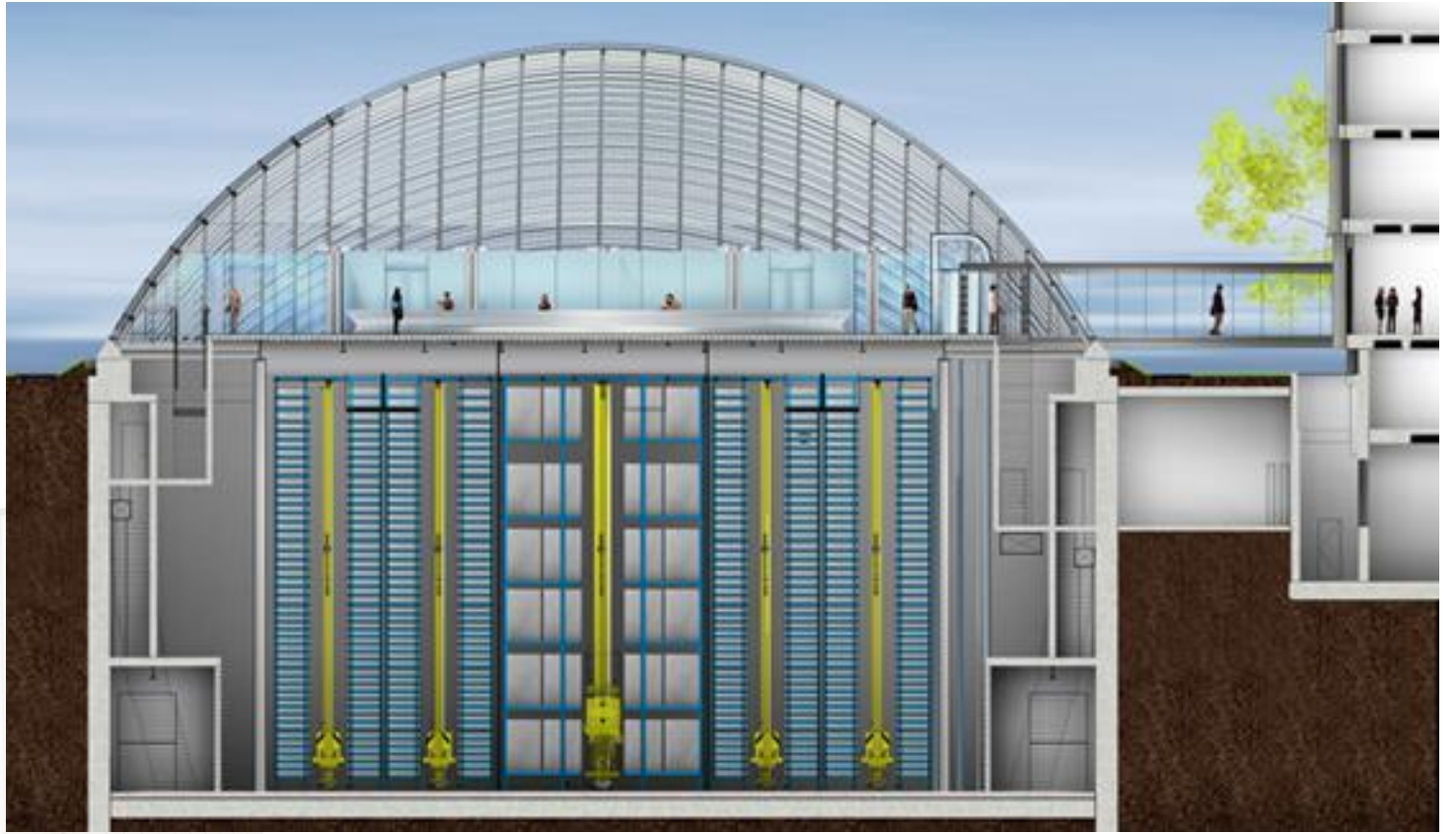


























Say Hello
to the smartest toaster ever

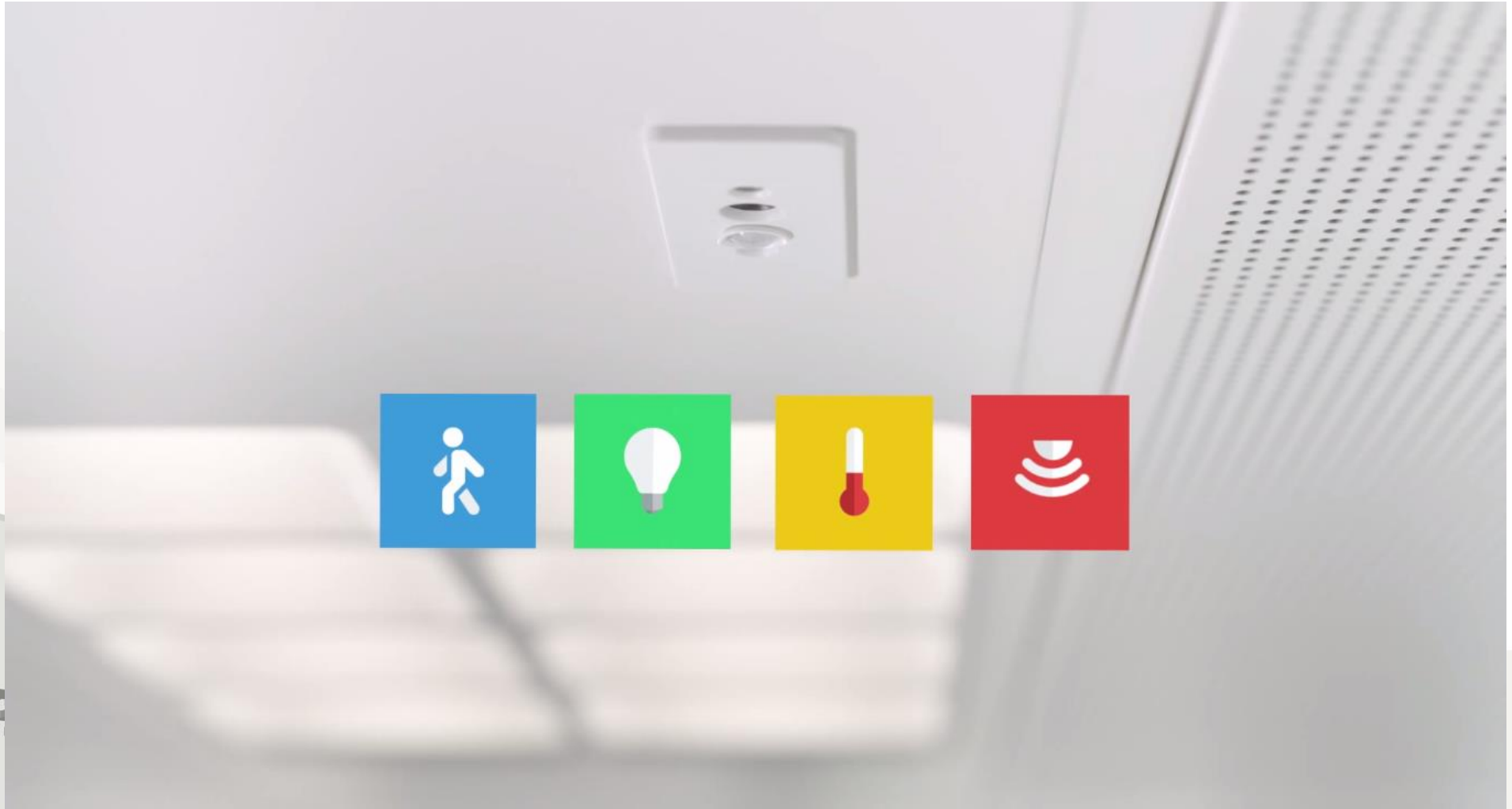
WATCH VIDEO

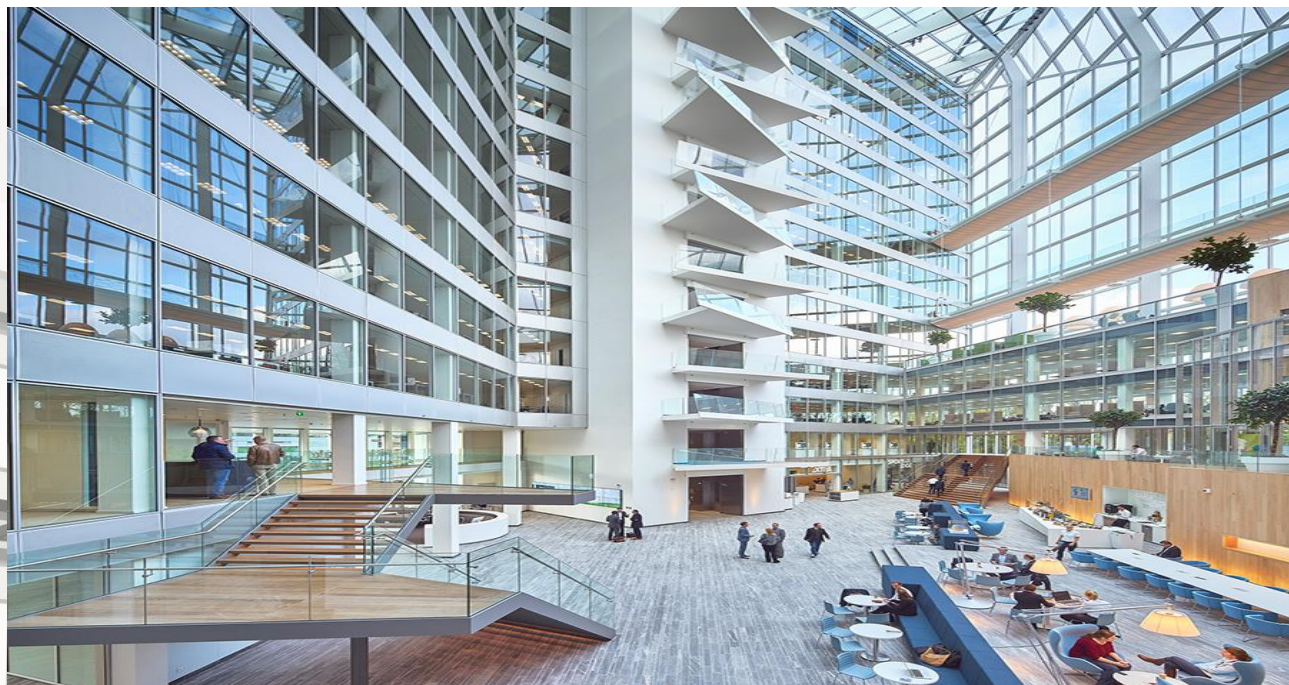


WHY POST-IT WHEN YOU CAN TOAST-IT

When sticky notes don't suffice, Toasteroid is here. Never miss an important date or leave your packed lunch behind again. Revolutionary edible reminders brought to you by Toasteroid.

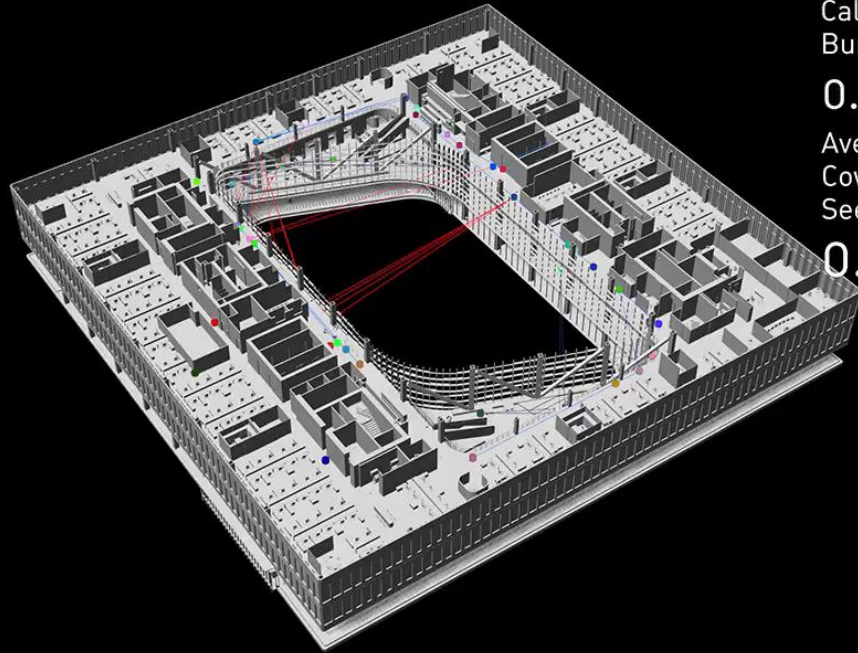




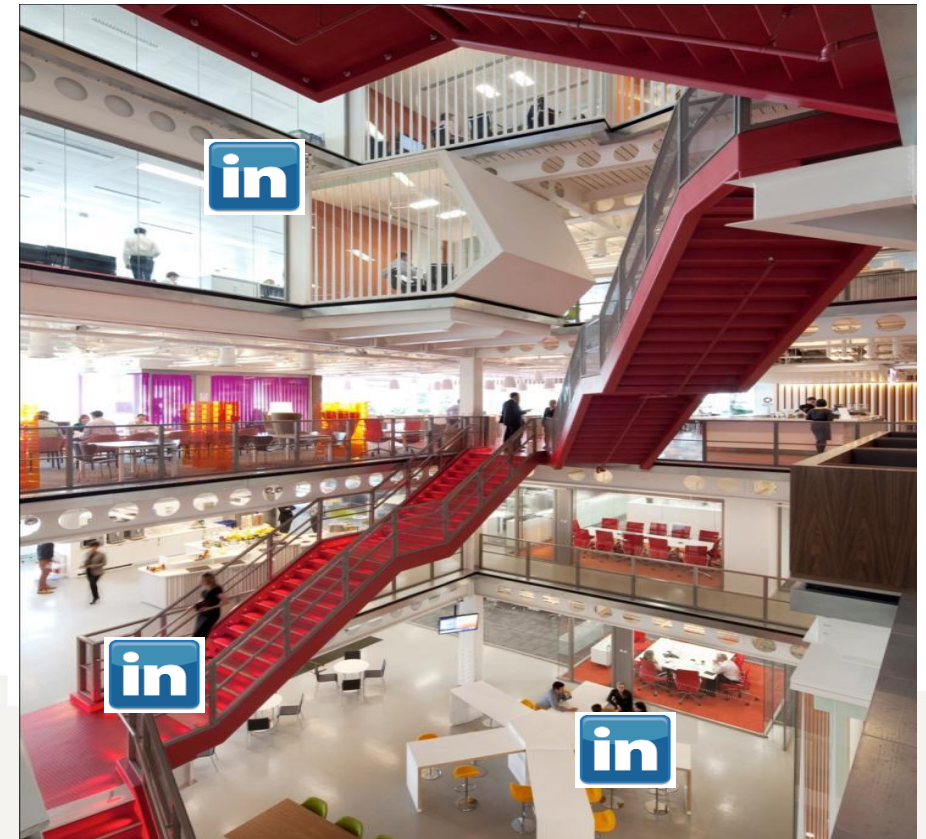




9:00 AM



Average
Calories
Burned:
0.00
Average
Coworkers
Seen:
0.3





Owen.King@Unwork.com

Unwork.com



Jellybean Learning

The Future of The University Campus



unwork

AUDE
Architectural University Design

